

Robbins, CA

\$650,000

Light Industrial property

Sutter Co. APN map 6.7 acres +/-



1364 sq. ft. +/-
with 16' and 20' doors



8,000 sq. ft 80' x 100' hay barn

Farm & Ranch Realty

Jeff Dyer

175 W. Main Street, Suite D
Woodland, CA 95695

Office: 530-666-4638

Fax: 530-666-4642

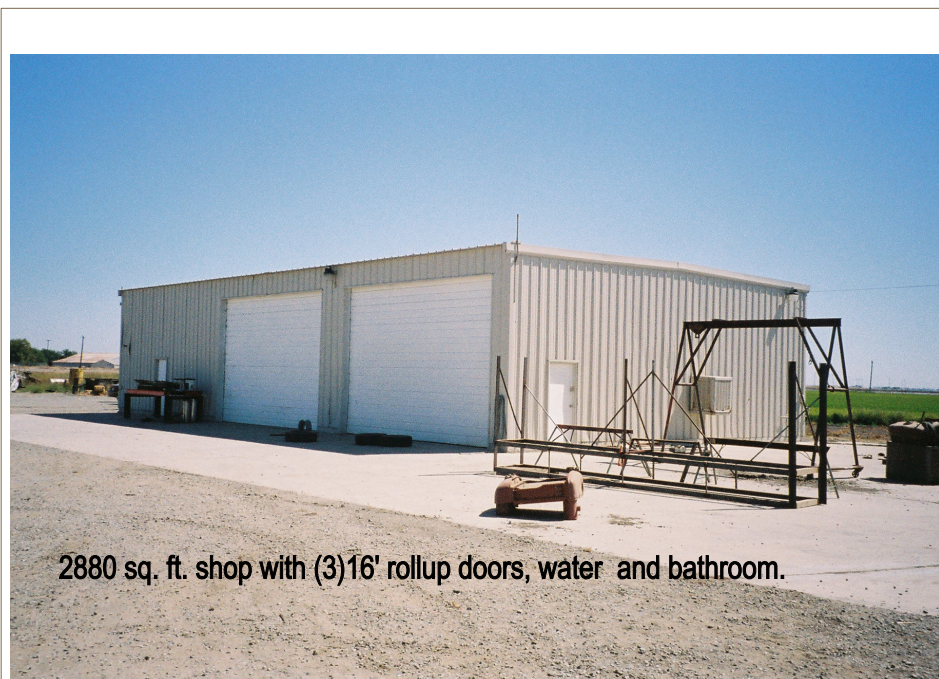
Cell: 530-908-4689

CA Real Estate license # 00553242

Email: jeff@farmranchrealty.us

Website: farmranchrealty.us

- 6.7 acres +/- between Yuba City & Woodland
- Great highway location with lots of traffic exposure
- Robbins, CA Sutter Co.
- Paved road frontage on East side and highway frontage on West.
- 2 trailers
- 2 shops and hay barn
- Currently used as farming headquarters
- Large graveled yard
- Water & sewer supplied by district
- Potential income from rental of yard and renting of shops & trailers.
- Current property taxes \$ 9,152



2880 sq. ft. shop with (3) 16' rollup doors, water and bathroom.

John Deere

Robbins

6.7 acres +/-

Light industrial

Robbins, CA

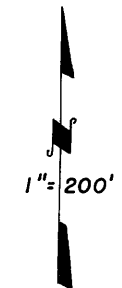
\$650,000

Highway 113

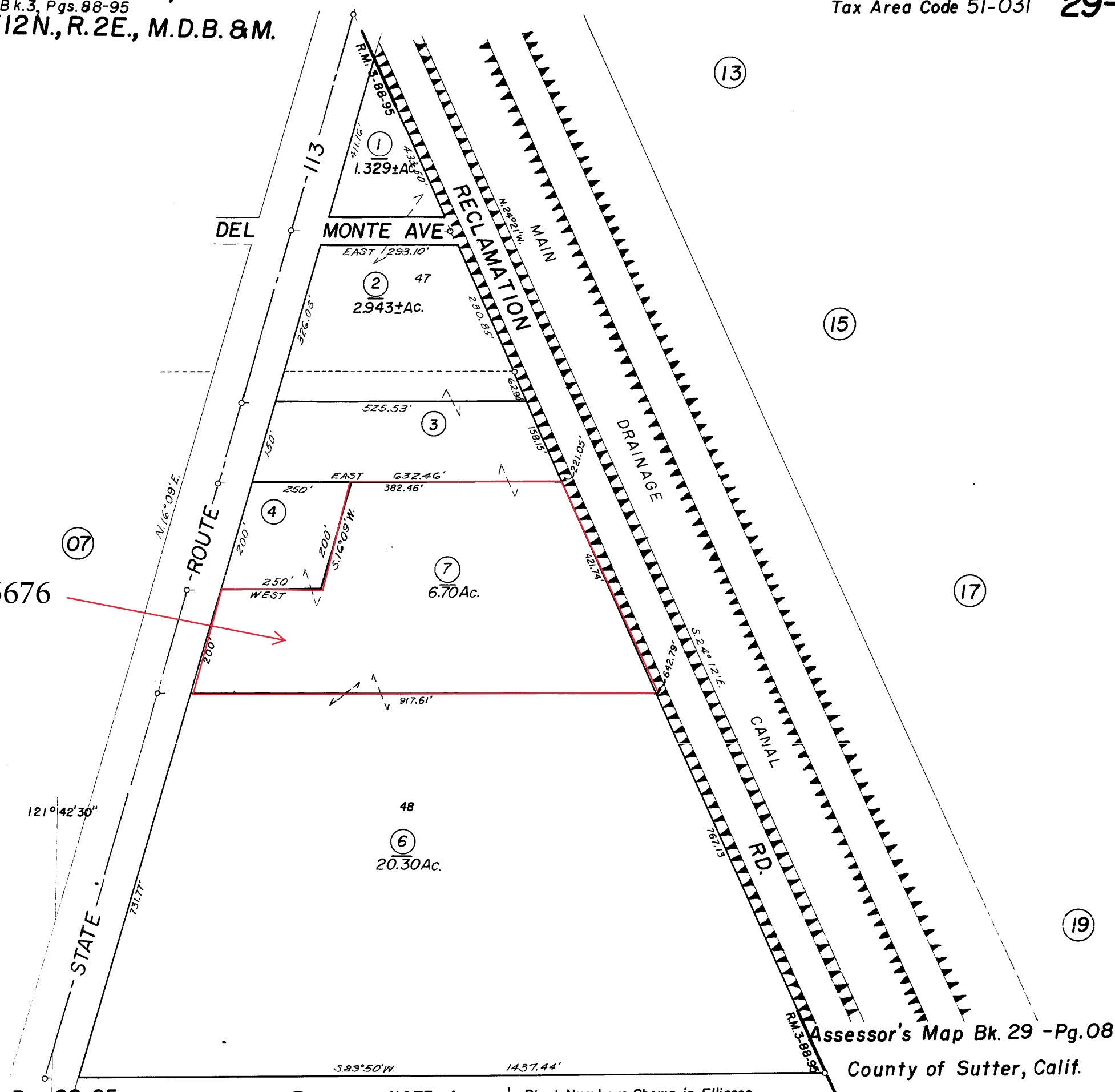
Google Earth

SUTTER BASIN SUBD. NO. 4,
 R. M. Bk. 3, Pgs. 88-95
 POR. W 1/2 SEC. 24, T. 12N., R. 2E., M.D.B. & M.

Tax Area Code 51-031 **29-08**



17812 Highway 113, Robbins, CA 95676



6.7 acres
Light industrial
Robbins, CA

